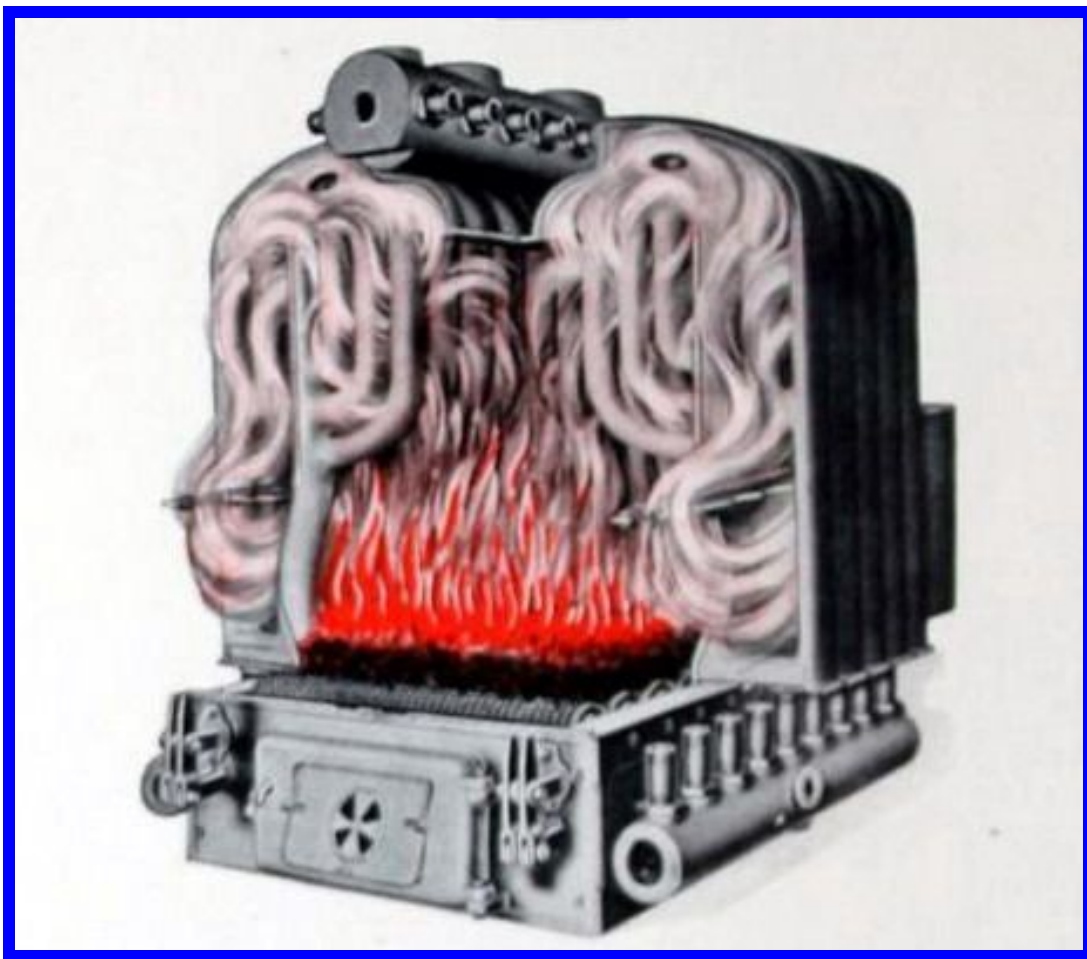


STEAM & HOT WATER BOILERS 1840-1930

H B Smith Company

WESTFIELD MASSACHUSETTS



CATALOGUE EXTRACTS

A History of the Company is given under Electronic Books/Manufacturers on the
Heritage Group Website

*Guaranteed
Heating
Satisfaction
at minimum cost*

for the Architect
Heating Contractor
and the Owner



DEC 1 '25

Guaranteed Heating Satisfaction at minimum cost

THE truth about boiler ratings. A money saving discussion of the heating problem for the Architect, Heating Contractor and Owner.

THE H. B. SMITH COMPANY

Established 1854

Westfield, Massachusetts

Manufacturers of Smith Boilers for steam, hot water and vapor heating; radiators; and hot water supply boilers; for every type and size of private home, office building, factory and public building.

Sales Offices and Warehouses at

WESTFIELD, BOSTON, NEW YORK, PHILADELPHIA, CLEVELAND

Copyright, March 1925, by

The H. B. Smith Company, Westfield, Massachusetts

The Truth about **BOILER RATINGS**

A pertinent, money-saving discussion of interest to owners of homes and buildings, and to those who are about to build them.

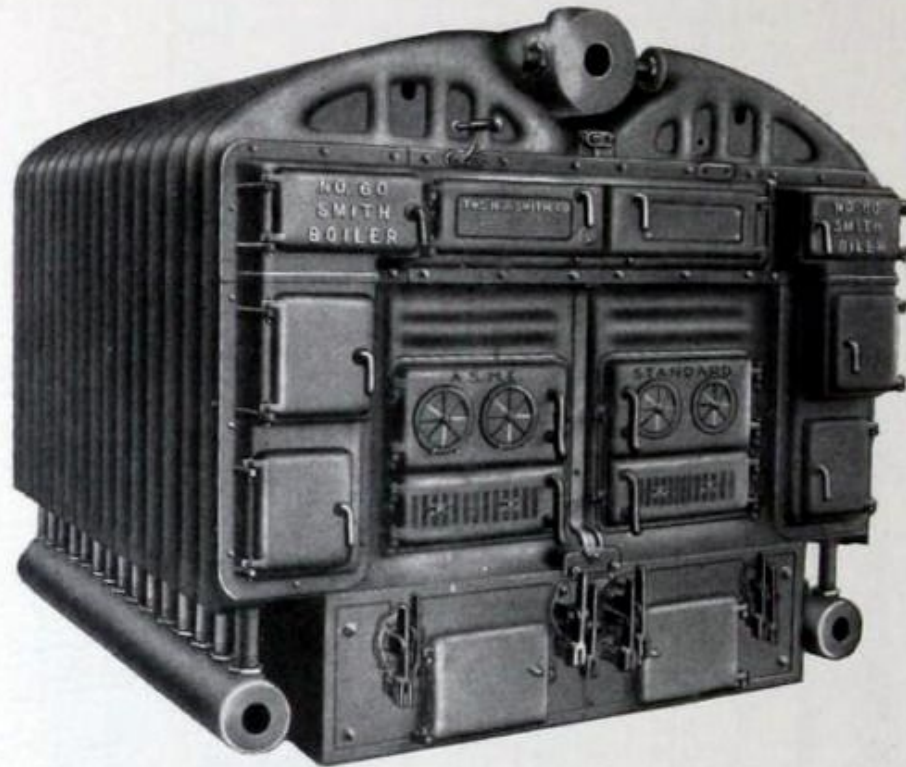
THIS book is not intended to be a complete discussion of the heating problem. Its purpose is to discuss one phase of the heating problem only, namely: boiler ratings. Long experience in the heating industry has shown us that this phase of heating stands in great need of a simple, commonsense explanation.

If you have had to buy a heating boiler lately, or if there is a chance that you will have to buy one in the near future, you have discovered, or it will be to your advantage to discover beforehand, that the subject of boiler ratings is a stumbling block to the unwary.

Briefly, and non-technically, the rating of a boiler means the size of the heating job that it can do. The rating answers the question, "How large a home or building can this boiler heat?" Or, to ask the question in the other direction, "How large a boiler do I need to heat my home?"

This seems like a very simple matter. But it isn't.

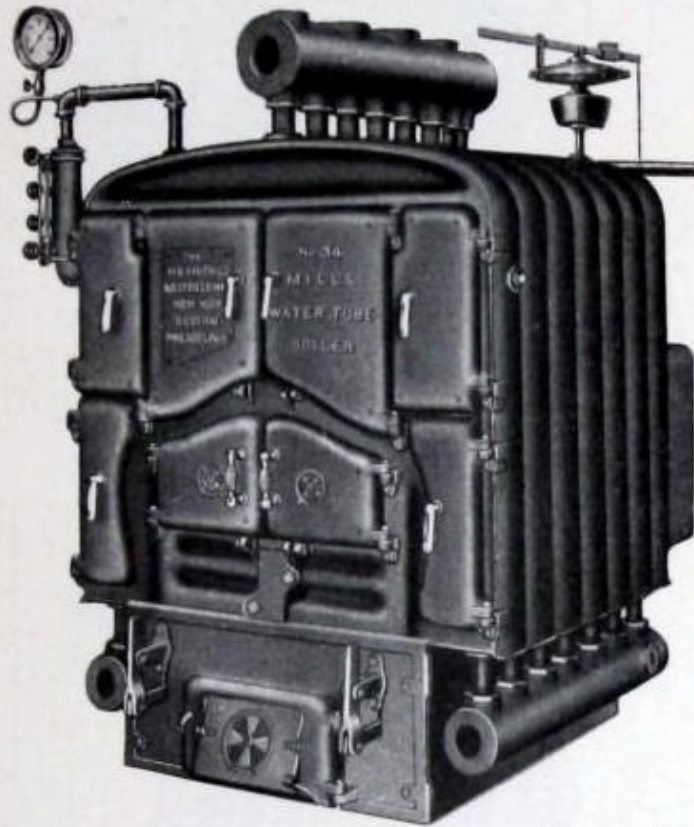
GUARANTEED HEATING SATISFACTION



No. 60 Smith Smokeless Boiler

FOR steam or hot water heating of large residences and public buildings. It will burn any kind of fuel; all grades of bituminous coals and lignites with a minimum amount of smoke, conforming to all smoke ordinances; minimum amount of attention; maximum amount of efficiency, and will burn all other fuels—anthracite coal (all sizes), coke (all sizes), oil, wood, with a maximum amount of efficiency.

AT MINIMUM COST



No. 34 Mills Water Tube Boiler

FOR steam or hot water heating. The economy of the Mills Water Boiler is due to its vertical water tubes which the hot flames envelope and the fact that the Mills Boiler has a larger per cent of direct fire surface than any other boiler. Made in sizes Nos. 24, 34, 44 and 48.

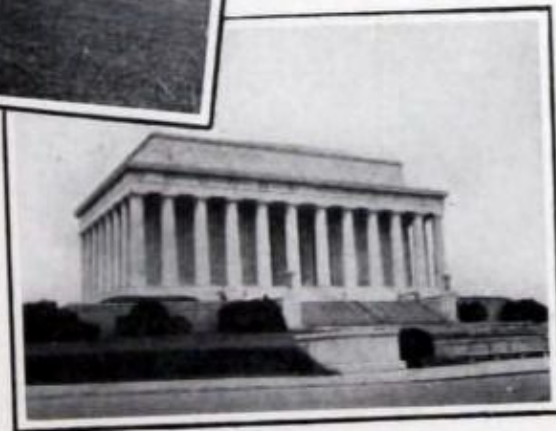
AT MINIMUM COST

*A few famous places
where Smith Products
are installed*

White House



Chevy Chase



Lincoln Memorial

No. 400

Steamfitters'

HANDBOOK

OF

Boilers and Radiators



The H. B. Smith Co.

728 Arch St., Philadelphia, Pa.

Works:
Westfield, Mass.

Salesroom:
133 Centre Street
New York, N. Y.

1907

1907

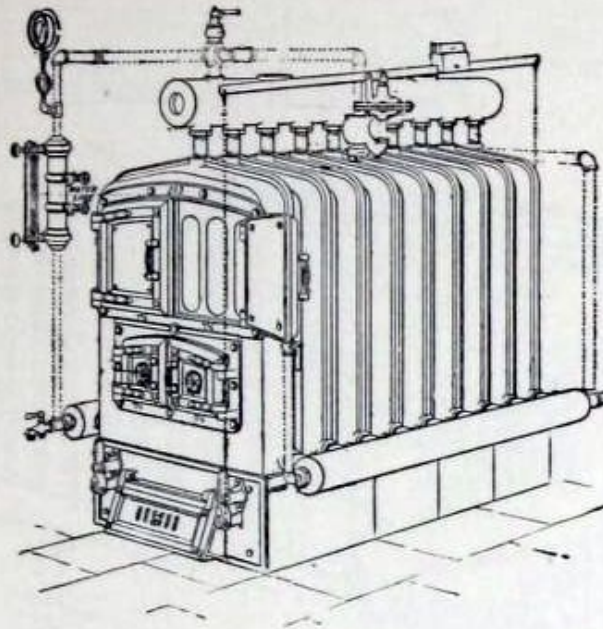
1853 — 1907

The **H. B. SMITH CO.**

MANUFACTURERS OF

Boilers *and*
Radiators

WESTFIELD, MASSACHUSETTS
U.S.A.

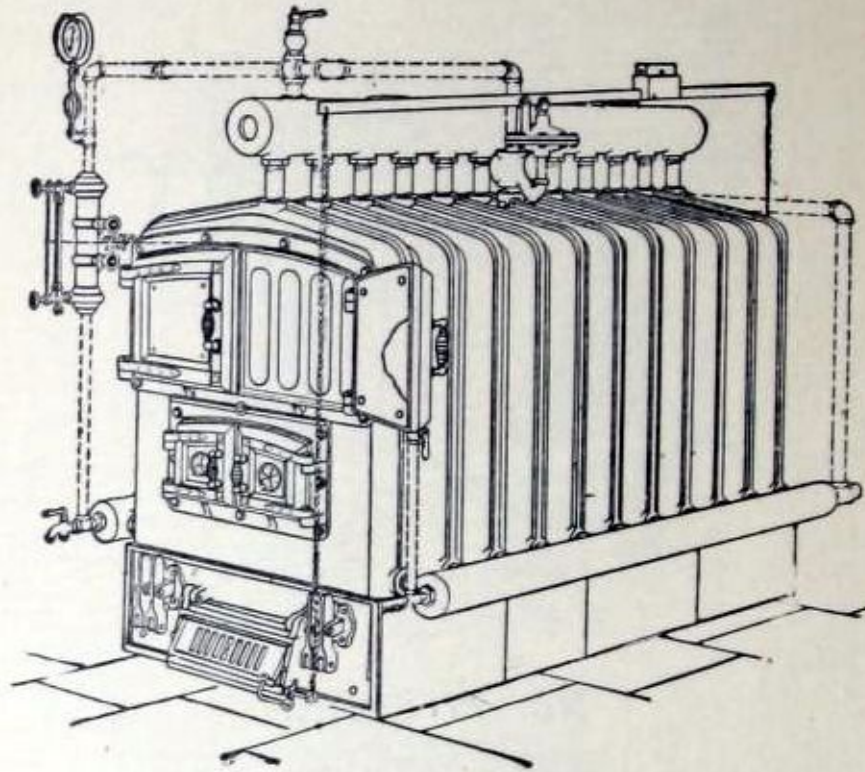
MERCER BOILER**No. 27 Steam****Ratings**

Sec- tions	Size of Grate* in inches	Area of Grate Sq. Feet	Area of Fire Surface Sq. Feet	Rating† Sq. Feet	Price
6	27 x 30	5 $\frac{5}{8}$	117	1150	\$370
7	27 x 36	6 $\frac{3}{4}$	135	1350	420
8	27 x 42	7 $\frac{7}{8}$	153	1550	470
9	27 x 48	9	171	1800	533
10	27 x 54	10 $\frac{1}{8}$	189	2050	595
11	27 x 60	11 $\frac{1}{4}$	207	2300	652
12	27 x 66	12 $\frac{3}{8}$	225	2550	705
13	27 x 72	13 $\frac{1}{2}$	243	2800	752
14	27 x 78	14 $\frac{5}{8}$	261	3050	795
15	27 x 84	15 $\frac{3}{4}$	279	3300	835
16	27 x 90	16 $\frac{7}{8}$	297	3550	877

*See Page 17.

†See Page 4.

MERCER BOILER



No. 36 Steam Ratings

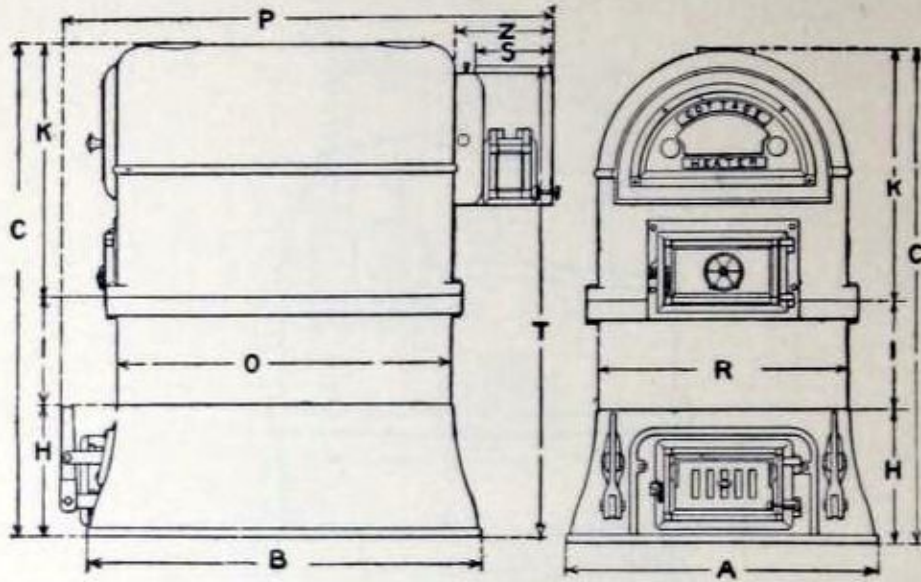
Sections	Size of Grate* in inches	Area of Grate Sq. Feet	Area of Fire Surface Sq. Feet	Rating † Sq. Feet	Price
7	36 x 36	9	180	1900	\$557
8	36 x 42	10½	210	2200	630
9	36 x 48	12	240	2500	694
10	36 x 54	13½	270	2850	761
11	36 x 60	15	300	3200	819
12	36 x 66	16½	330	3600	885
13	36 x 72	18	360	4000	952
14	36 x 78	19½	390	4400	1019
15	36 x 84	21	420	4800	1085
16	36 x 90	22½	450	5200	1152

NOTE. — No. 36 Mercer Boilers of more than eight sections of grate are arranged with four shaking levers.

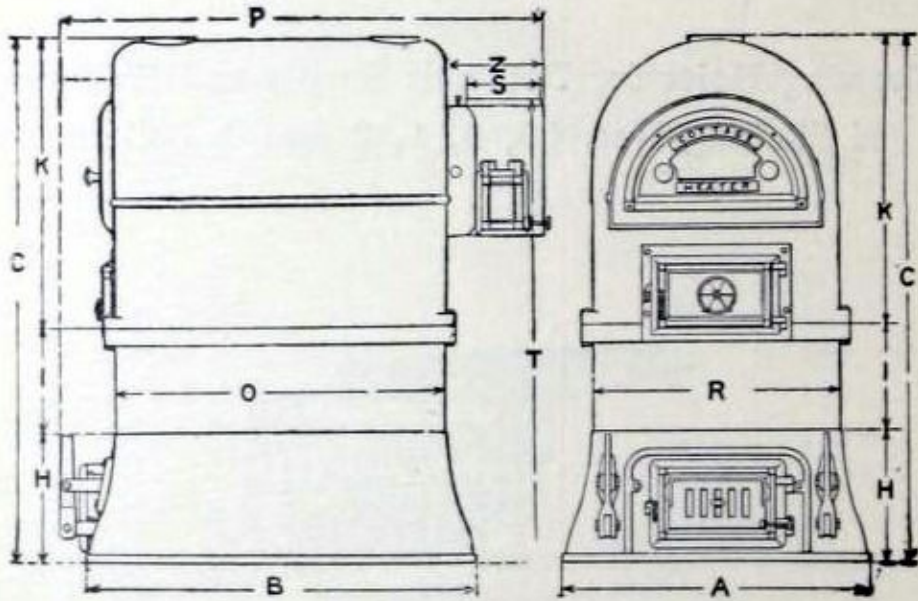
* See Page 17.

† See Page 4.

COTTAGE BOILER

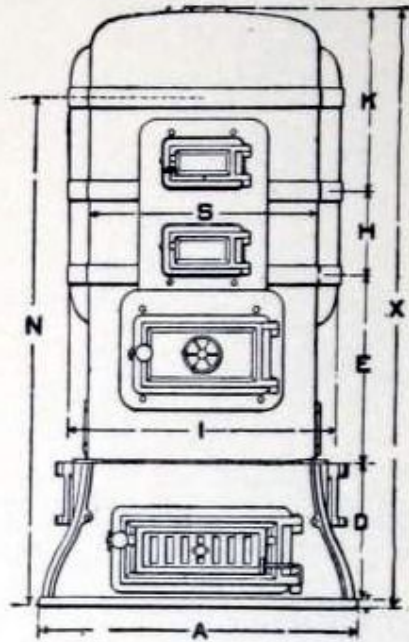


Water Boiler
Dimensions



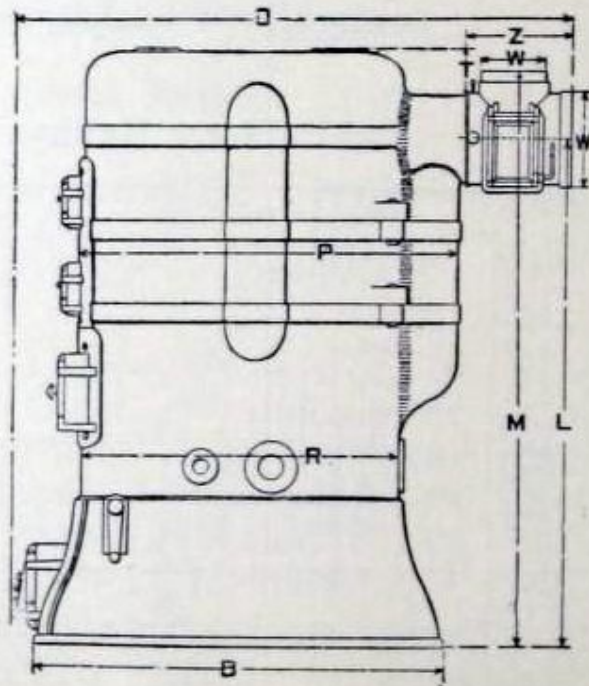
Steam Boiler
Dimensions

HOMESTEAD BOILER



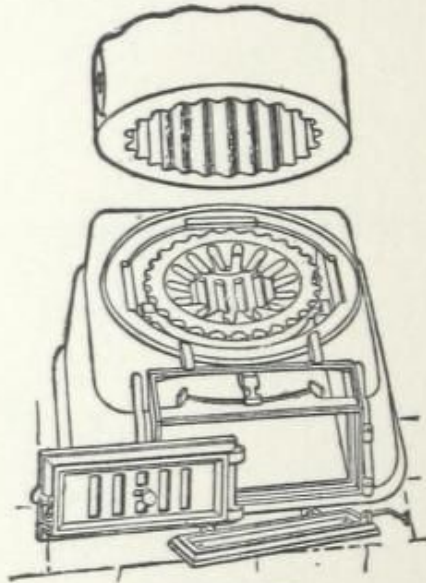
FRONT
ELEVATION

SIDE
ELEVATION



MENLO BOILER

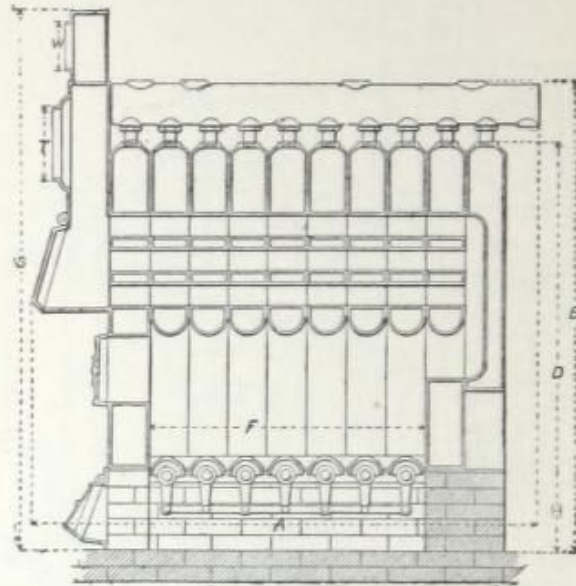
Nos. 10, 12 and 14 Menlo
Showing Fire Travel



ASH PIT

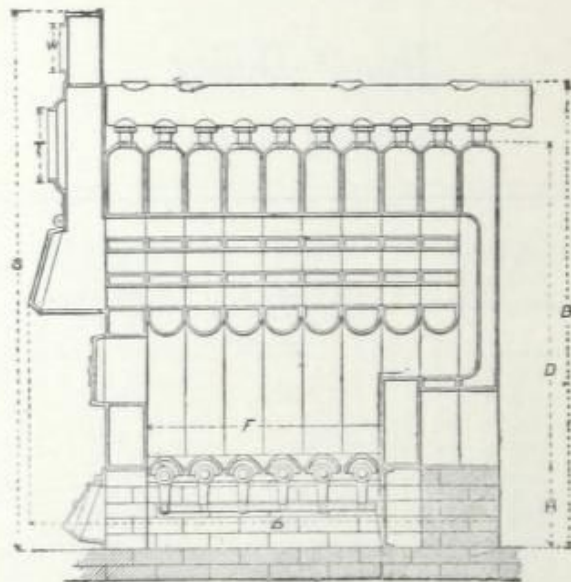
Nos. 10, 12 and 14 Menlo
Showing Grates with Method of Shaking and
Dumping

GOLD BOILER



Longitudinal Section

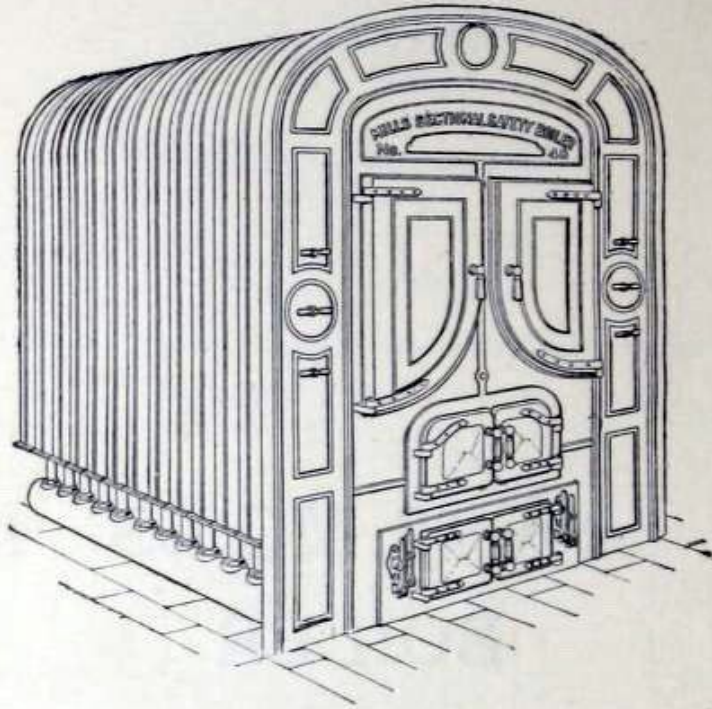
Grate Full Size



Longitudinal Section

Grate Reduced 6 Inches

No. 48 MILLS BOILER

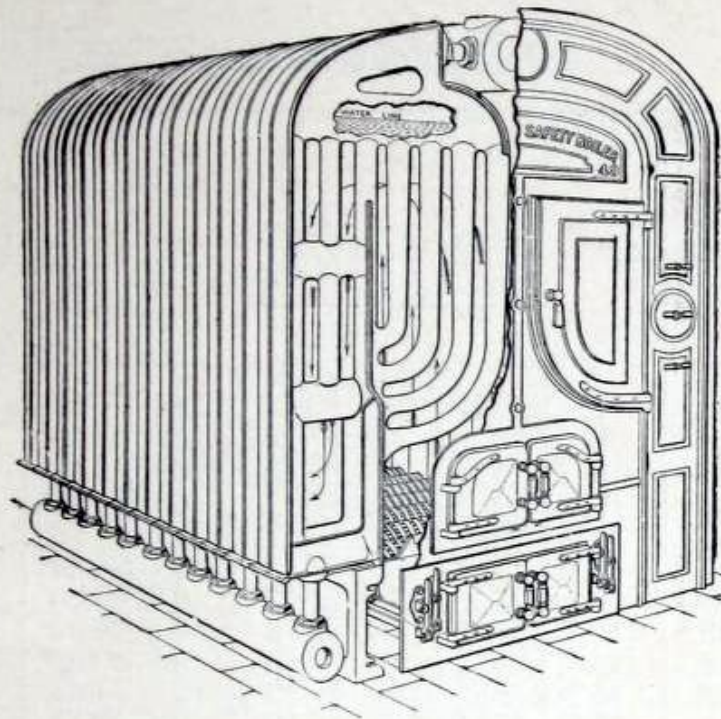


Steam Ratings

No.	Size of Grate in Inches	Grate Surface Sq. Ft.	Fire Surface Sq. Ft.	Ratings* Sq. Ft.	Price
748	48 x 30	10	360	4800	\$1085
848	48 x 36	12	420	5600	1219
948	48 x 42	14	480	6400	1352
1048	48 x 48	16	540	7200	1485
1148	48 x 54	18	600	8000	1619
1248	48 x 60	20	660	8800	1752
1348	48 x 66	22	720	9600	1885
1448	48 x 72	24	780	10400	2019
1548	48 x 78	26	840	11200	2152
1648	48 x 84	28	900	12000	2285
1748	48 x 72	24	960	12800	2419
1848	48 x 78	26	1020	13600	2552
1948	48 x 84	28	1080	14400	2685
2048	48 x 84	28	1140	15200	2819

*See Page 4.

No. 48 MILLS BOILER



Water Ratings

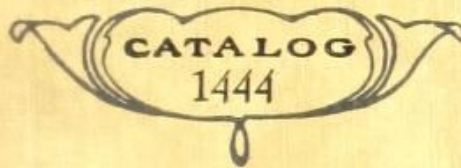
No.	Size of Grate in inches	Grate Surface Sq. Ft.	Fire Surface Sq. Ft.	Ratings* Sq. Ft.	Price
748	48 x 30	10	360	7925	\$1035
848	48 x 36	12	420	9250	1169
948	48 x 42	14	480	10550	1302
1048	48 x 48	16	540	11875	1435
1148	48 x 54	18	600	13200	1569
1248	48 x 60	20	660	14525	1702
1348	48 x 66	22	720	15850	1835
1448	48 x 72	24	780	17150	1969
1548	48 x 78	26	840	18475	2102
1648	48 x 84	28	900	19800	2235
1748	48 x 72	24	960	21125	2369
1848	48 x 78	26	1020	22450	2502
1948	48 x 84	28	1080	23750	2635
2048	48 x 84	28	1140	25075	2769

* See Page 4.

697.1

NOV 8 1929

BOILERS AND RADIATORS



The H·B·SMITH CO·



WESTFIELD ^{MASS}
NEW YORK
BOSTON
PHILADELPHIA
CLEVELAND



**The
H. B. SMITH CO.**

WESTFIELD, MASS.

**10 East 41st Street
NEW YORK**

**2209 Chestnut Street
PHILADELPHIA**

**640 Main St., Cambridge
BOSTON**

**1108-1110 Webster Ave., S. E.
CLEVELAND**

**BOILERS USED EXCLUSIVELY FOR LOW PRES-
SURE STEAM AND HOT WATER HEATING
AND HOT WATER SUPPLY**

**BOILER AND RADIATOR
CATALOG NO. 1444**

(Superseding No. 1362-A)

1929

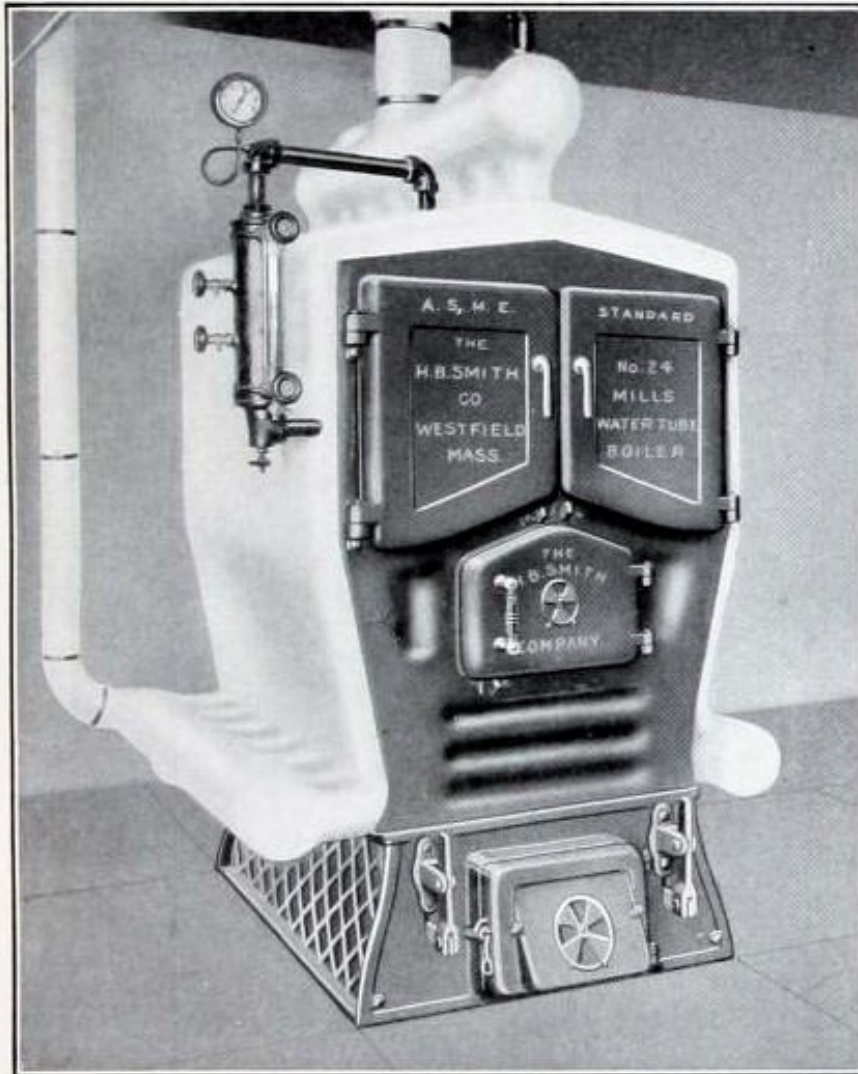
THIS Handbook is published with the purpose of combining within a convenient space much useful information. We believe that such a publication will meet the desires of our customers and serve to further our mutual interests.

That this book will prove of value has been shown by past expressions of appreciation from the trade at large, and a steady demand which quickly exhausted our past editions.

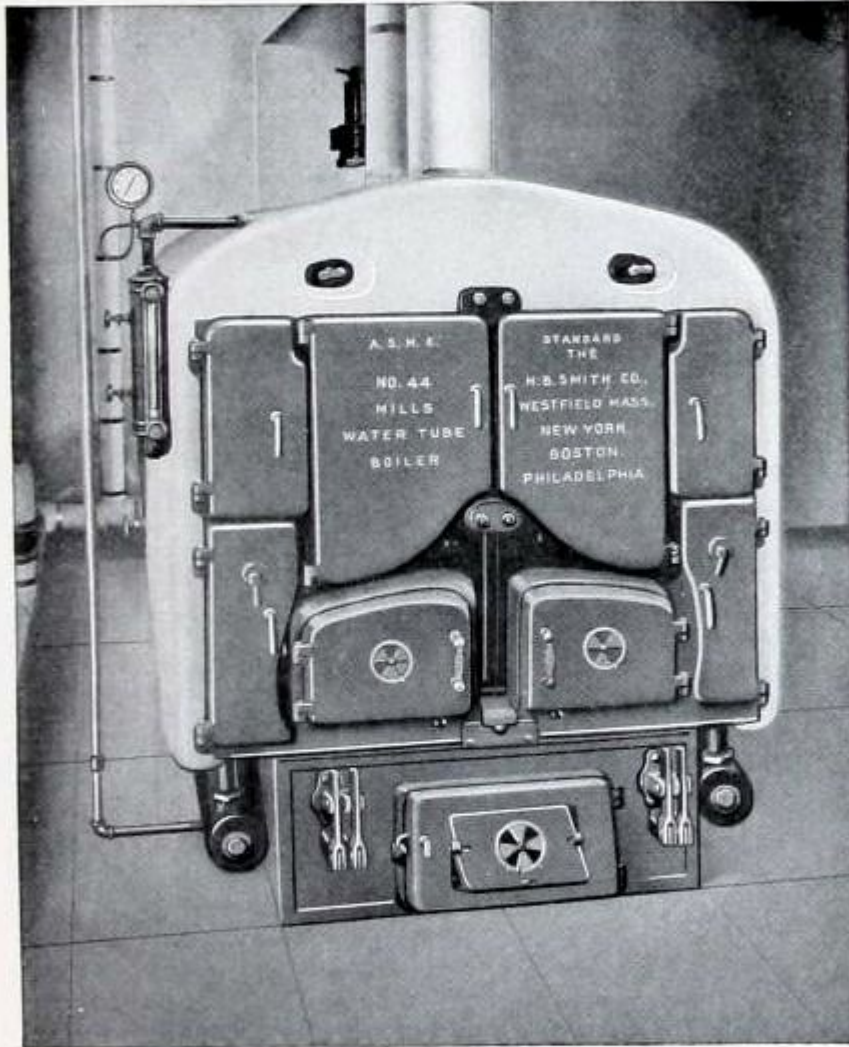
In compiling this book, the old style material no longer carried in stock, has been omitted, and considerable new matter added such as: A new member to our line of Quality Boilers, a complete line of Full Surface Radiation, a new Specialty Section.

It is our hope that this book will prove of much practical use to our friends — The Trade — and promote the continuance of their favor and patronage.

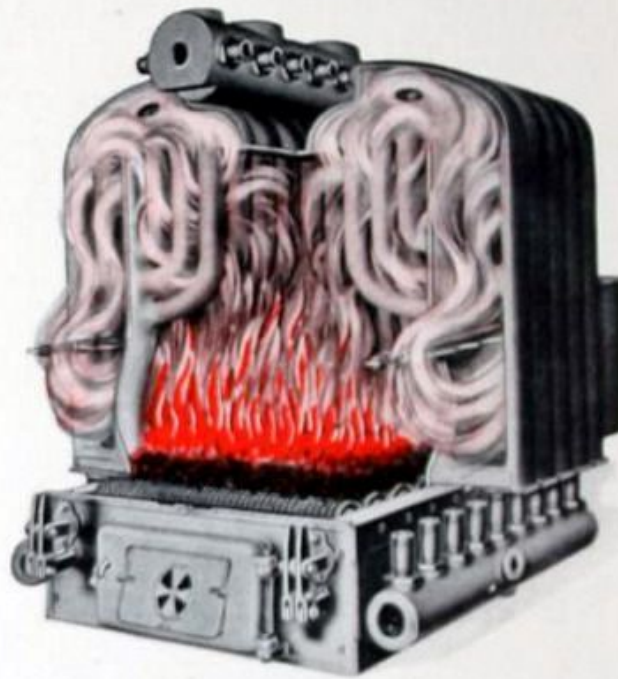
THE H. B. SMITH COMPANY



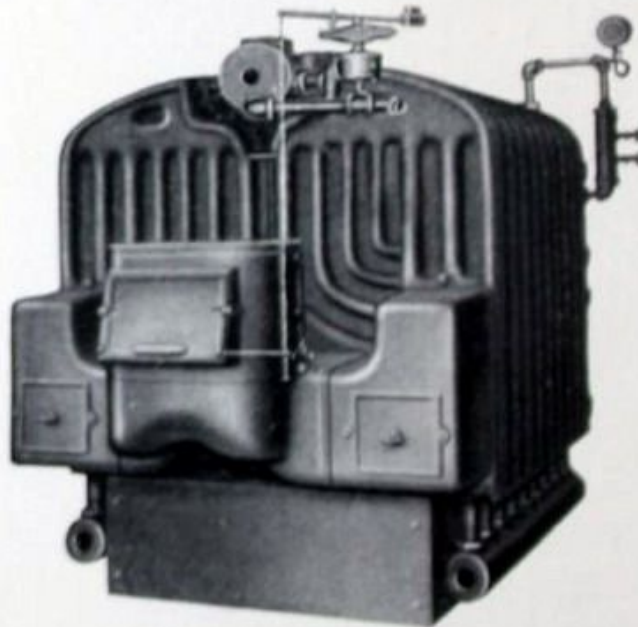
NO. 24 MILLS WATER TUBE BOILER



NO. 44 MILLS WATER TUBE BOILER



FIRE ACTION ON THE TUBE SURFACE
OF THE MILLS BOILER



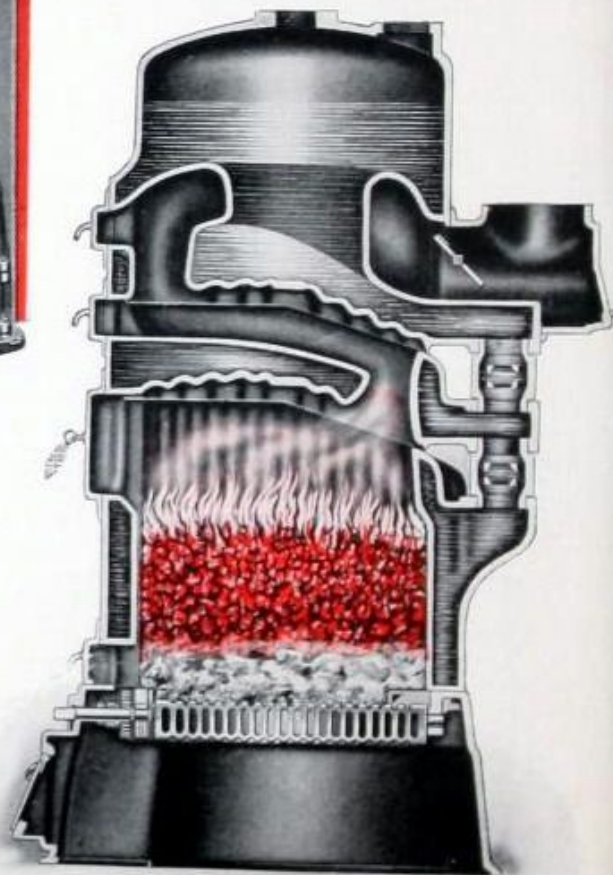
44 REAR VIEW — STEAM

H-B BOILERS



H-B Boiler
Tailored in Mountain
Ash Scarlet

The Boiler with the
Swell Front



H-B STEAM BOILER

Transverse Sec-
tion—

Showing Hori-
zontal Fire Travel
and Large Verti-
cal Water Ways



H B SMITH No. 60 BOILER, 196

H. B. SMITH CO.

Manufacturers of Boilers and Radiators

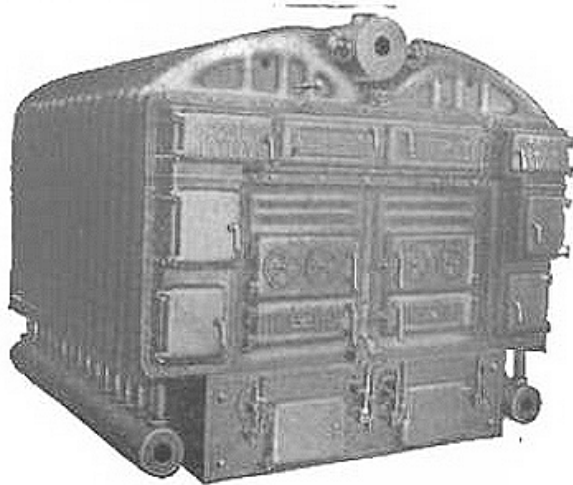
WESTFIELD, MASS.

BRANCH OFFICES AND WAREHOUSES
 BOSTON, MASS., 138 Washington Street, North NEW YORK, N. Y., 10 East 39th Street
 PHILADELPHIA, PA., 17th and Arch Streets

PACIFIC COAST REPRESENTATIVES: HOLBROOK, MERRILL & STETSON, SAN FRANCISCO AND LOS ANGELES, CAL.

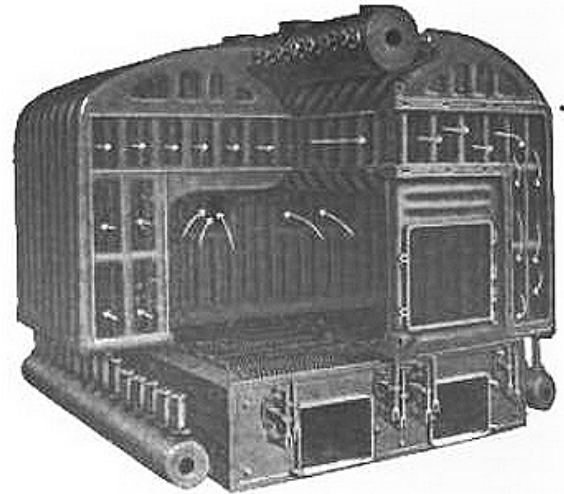
Products.

SMITH BOILERS (with and without Smokeless Furnace); "MILLS" (Water Tube) STEAM and WATER BOILERS; TANK HEATERS; W-17 SMITH SERVICE HEATER; "H-B" and "MEXLO" BOILERS; "PRINCESS" DIRECT and WALL RADIATORS.



FRONT, NO. 60 SMITH BOILER
 DATA, SMITH BOILER WITH SMOKELESS SURFACE

Number of sections in boiler	Nominal size of firebox, in.	Steam rating, ft.	Water rating, ft.
No. 27			
5	27 x 24	1200	1975
6	27 x 30	1500	2475
7	27 x 36	1800	2975
8	27 x 42	2100	3475
9	27 x 48	2400	3950
10	27 x 54	2700	4450
11	27 x 60	3000	4950
12	27 x 63	3300	5150
12	27 x 66	3600	5450



INTERIOR, NO. 60 SMITH BOILER
 DATA, SMITH BOILER WITHOUT SMOKELESS FURNACE

Number of sections in boiler	Nominal size of firebox, in.	Steam rating, ft.	Water rating, ft.
No. 27			
5	27 x 24	1200	1975
6	27 x 30	1500	2475
7	27 x 36	1800	2975
8	27 x 42	2100	3475
9	27 x 48	2400	3950
10	27 x 54	2700	4450
11	27 x 60	3000	4950
12	27 x 63	3300	5150
12	27 x 66	3600	5450



THE H. B. SMITH CO., INC.
WESTFIELD, MA.



BB14 BOILER

REG. U.S. PAT. OFF.

NO. SECTS.	SQ. FT. STEAM	I-B-R NET RATINGS		I-B-R BURNER CAPACITY LIGHT OIL GAL./HR.	SAFETY VALVE CAPACITY *LBS./HR.
		MBH STEAM	MBH WATER		
3	300	71.3	82.6	.85	207
	390	93.8	108.7	1.10	207
4	485	116.3	134.8	1.40	294
	580	138.8	160.6	1.65	294
5	670	161.3	187.0	1.95	380
	765	183.8	213.0	2.20	380
6	860	206.3	239.1	2.50	466
	955	228.8	265.2	2.75	466

67-9-963

MAX. W.P. STEAM 15 P.S.I.
WATER 40 P.S.I.

*A.S.M.E. VALVE CAPACITY
1000 BTU = 1 LB. STEAM

MEMBER THE HYDRONICS INSTITUTE